

a measurable difference...



Constant Deflection Static Force

Model: F0027

The Constant Deflection Static Force instrument determines the loss of indentation force deflection (IFD), loss of thickness and the structural breakdown by visual assessment of polyurethane.

This process will test a polyurethane sample at a 75% uniform, constant deflection, using two parallel plates. Spacer bars are also used in the machine to maintain a constant 75% deflection throughout the test.

Application:

- Flexible Cellular Polyurethane

Features:

- Plates: 500mm x 500mm
- Test Area: 380mm x 380mm

Standards:

- ASTM D3574 – Test I₁
- JIS K 6400

Options:

- TBA

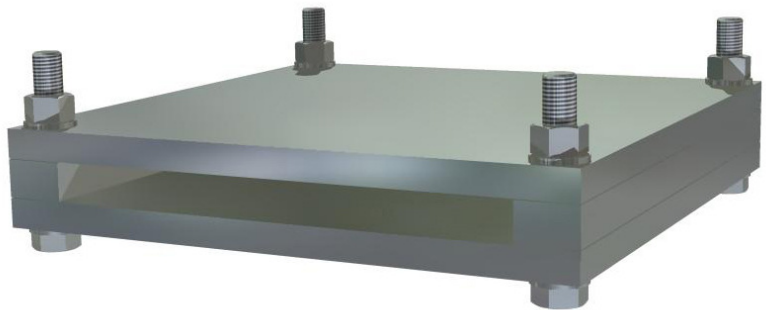
Connections:

- **Electrical:** 220/240 VAC @ 50 HZ or
110 VAC @ 60 HZ

(please specify when ordering)

Dimensions:

- To suit Sample Size: 380mm x 380mm
- **Weight:** 112 kg



10-11 Colrado Court, Hallam, Victoria 3803 Australia.

Phone: +61 3 9708 6885 Fax: +61 3 9708 6770

Website: www.idminstruments.com.au Email: idm@idminstruments.com.au

All sizes and dimensions shown on this data sheet are averages only and images are as accurate as the medium allows. Products and details shown may change without notice as IDM Instruments Pty Ltd[®] reserves the right to make alterations to its product range from time to time.

Copyright © 2006 IDM Instruments Pty Ltd[®]. All Rights Reserved.